

Project:



Scan for more info!

Owners manual
Quick install
Quick sizing
Install layout
Parts list

CR-1PB

Countertop push button



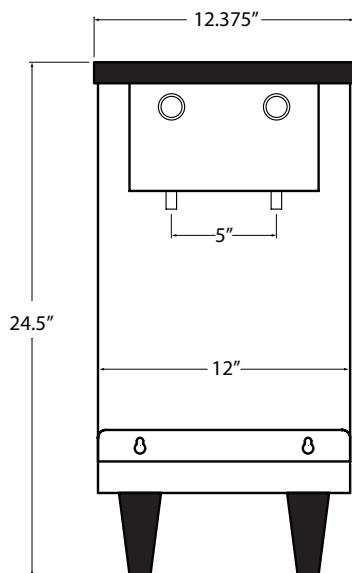
*Mirrored finish available upon request

Sparkling and chilled still water on tap

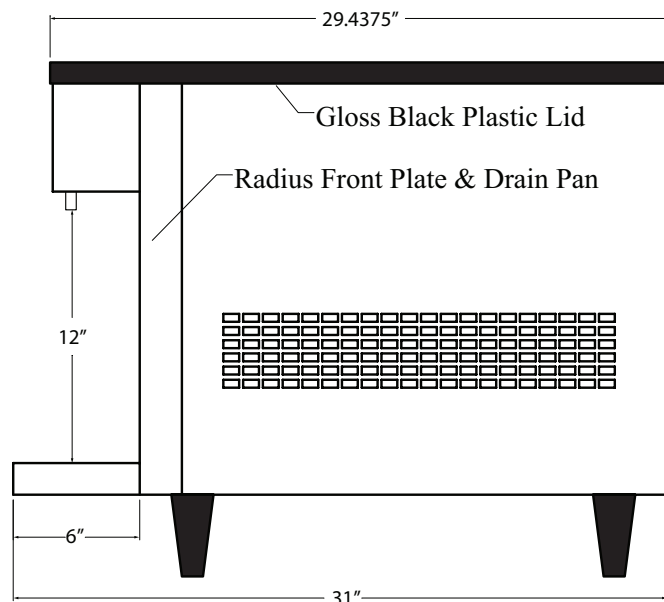
- Cold carbonation for better long lasting sparkling water
- Push button dispensing; ideal for self service use
- Sleek design
- 304 stainless steel brushed finish*

Specifications

- 50 liters per hour @<40°
- Self-contained refrigeration system
- Compressor: 1/5 H.P.
- Refrigerant: R134a CFC-free
- BTU: 2,200 per hour Ave
- Operating temperature range: 40°-100°
- Electrical: 120v - 9.6 Amps
- Carbonator: 1/3 H.P.
- Water Bath: 4 Gallons
- Ice Bank: 9.5 lbs
- Weight: 115 lbs
- Clearance: 12"
- 12"W x 31"D x 24.5"H



- 3/8" Water inlet connector
- 7' Over flow drain hose
- 7' CO2 hose 1/4" flare fitting
- 9' Electrical cord NEMA 5-15
- 4.25" legs



- Air intake at rear with air filter
- Allow for 6" rear & side clearance around unit for air flow
- Drip/Drain Pan: 1/2" barb fitting

Accessories

□ CR-24FCP with prefilter

□ CR-24FC without prefilter

Twin filter system with compact fibredyne filters, 19"H x 17"W 5 gpm, 30,000 gal, TOC & 1/2 micron filtration



□ CR-KIT-CT

Installation kit for countertop units, CR-1 & CR-2, includes: fittings and oetiker clamps and extra tubing to install the filter systems and countertop unit



□ CR-PC160-14FCV

Primary high pressure CO2 regulator for CO2 tank



□ CR-CTAC2

CO2 cylinder auto change over device. Connects two cylinders at one time to double your CO2 capacity.



□ CR-CWB: Single cylinder

□ CR-CWB2: Two cylinders

CO2 cylinder wall brackets, to safely strap and secure cylinders to the wall



□ Customer supplied CO2 tank required

