



PREVENTATIVE MAINTENANCE

Summary of our cleaning and maintenance schedule:

- Daily – **wipe down equipment**
- Weekly – **clean faucets & check CO2 levels**
- Monthly – **clean air filter, check water filters and water pressure**
- Quarterly – **check water bath level (top off if needed)**
- Semiannually – **change water filters & drain and clean water bath**
- Annual – **inspect water bath components & flush system with food grade sanitizer & rinse**

For detailed cleaning and maintenance recommendation go to:
www.Crysalli.com or call customer service at 510-732-0100



CLEANING AND MAINTENANCE RECOMMENDATIONS

Daily:

Wipe down the unit or draft tower, cleaning and drying all surfaces. (Use window cleaner on mirrored and chrome finishes).

Clean and dry drain pan and drain grate. Check that water is draining, pour warm water down drain if necessary.

Check over faucets for action and hand tighten any loosened handles or nuts on them. The set nut holding the handle down will loosen with use.

Check flow from faucet, loosen, readjust and tighten flow control knob as needed.

Check that flow, temperature and carbonation of water poured from the unit are consistent to average use.



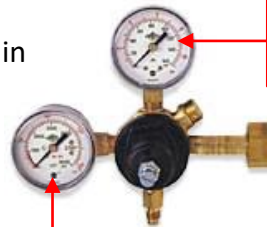
Adjust flow as needed

Weekly:

Clean the faucets by wiping them down. If there is any scale or slime, submerge them in cleaner/sanitizer and use a brush on them.

Check CO2 level at CO2 tank. CO2 pressure to system should be 75 PSI.

On Average 1 Pound of CO2 will produce 5 Gallons of Sparkling water.
So a standard 20 LB CO2 tank should carbonate 100 Gallons of Water
(or 12,800 OZ of Sparkling Water).



CO2 Pressure
should be 75 PSI

CO2 Tank Pressure
If in red exchange tank

Monthly:

Clean the air filter. Remove it to brush down and wash off dust and dirt, then reattach.

Check for good water pressure at the water filter system by running water from flush valve on filter.

Visually check pre-filter in clear bowl on water filter system (if applicable) to determine if it needs replacing. Use only EPC5-10 replacement pre-filter cartridge.

Air filter. Removed, cleaned and reinstall. "A dirty air filter will restrict air flow through the condenser which could result in poor performance and damage to the compressor".



This gauge reads
incoming water
pressure.

Outlet pressure gauge
should read 20 PSI+ when
carbonator pump is running



Flush valve

Pre-filter replacement
cartridge EPC5-10

CLEANING AND MAINTENANCE RECOMMENDATIONS

Quarterly:

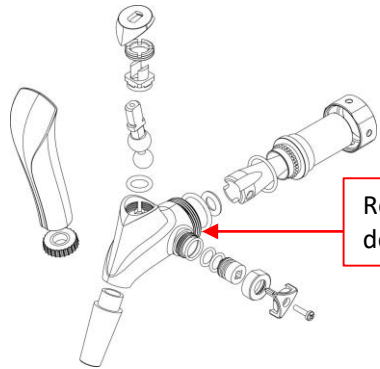
Check the water bath level, either top off or drain, clean and refill.



Water level should be 1/4" below white overflow pipe stem

Semiannually:

Change the water filters. Use only 4FC replacement filter cartridges. The Twin Filter system can remove up to 30,000 Gallons of Taste, Odor, Color and Chlorine from the water. But can clog earlier than that depending how much dirt and debris is in the water that it is stopping. Drain water bath, clean and refill with new water. Remove and disassemble faucets for cleaning and inspection.



Refer to CR-SSQ1231 – Faucet guide for detailed disassemble and assembly procedures

Annually:

Inspect internal water bath components such as Agitator/re-circ pump and blade, check valves for CO2 and Water, and all hose connections. Flush and rinse system with food safe sanitizer (this work should be performed by a certified service tech).



4FC filter cartridges x2



Drain water bath by removing white overflow pipe stem. Water will drain through drain line to drain.



Inspect agitator/ re-circ pump & blade