

CHECKING IF THE WATER FILTERS ARE PLUGGED

4FC Filters: High TOC capacity, submicron, 3 stage, fibredyne technology filters.

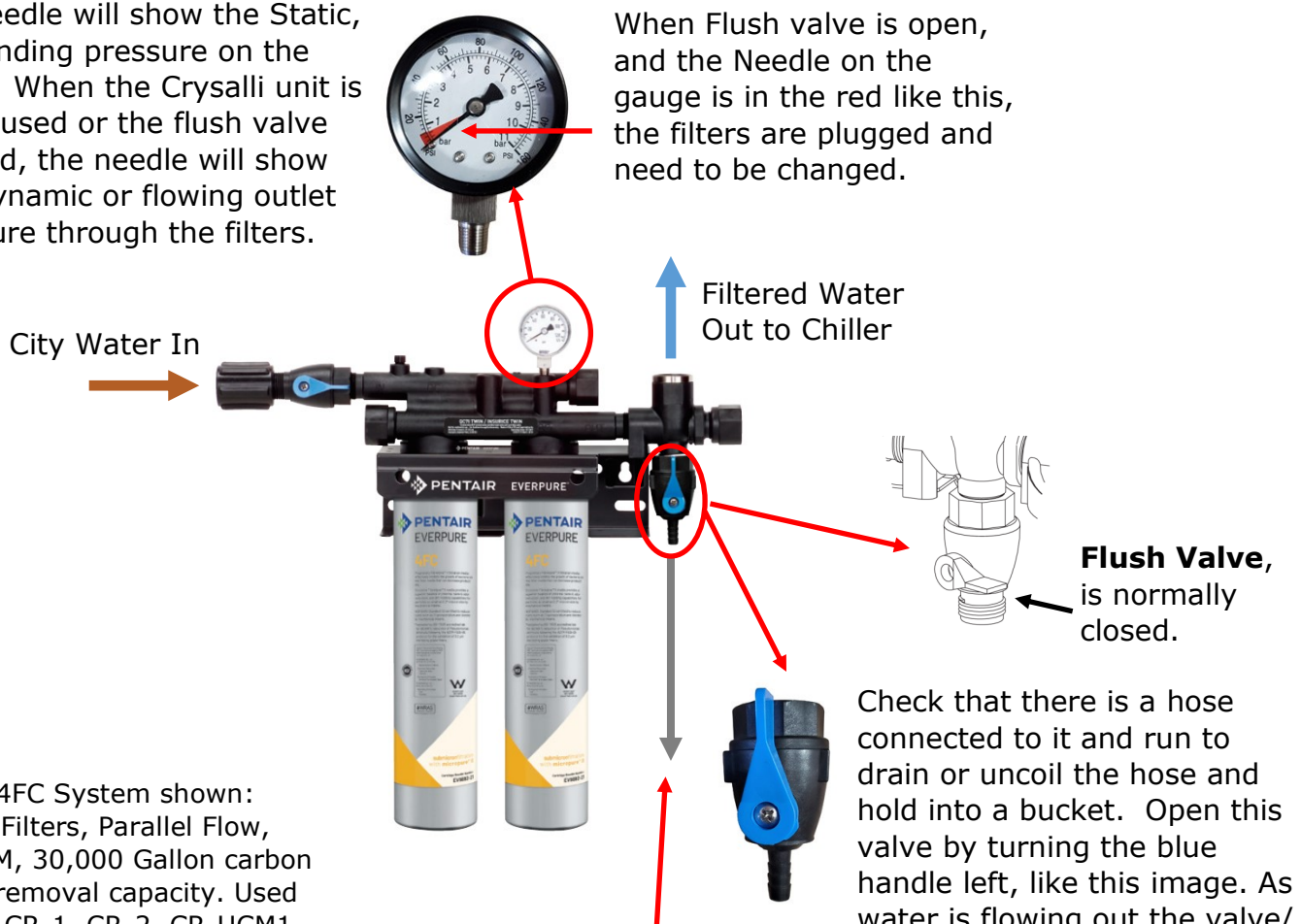
In order for 4FC filters to perform as represented and to provide the best quality water possible, it is essential that filters be replaced periodically. The frequency of filter changes depends upon your water quality and your water usage. Be sure to replace your filters whenever you notice a decline in performance, whether it is a drop in flow rate from the still side faucet, loud pump noise from sparkling side faucet and/or an unusual taste in the water.

These cartridges are designed to remove contaminants and particles as small as 0.5 micron from the water. The cartridges will eventually plug as this material is removed, therefore, plugging indicates that the cartridges are working efficiently. If a cartridge plugs soon after installation, there are various things such as construction in your area or changes in reservoir levels that may alter the quality of your incoming water from day to day. This may produce low water pressure or excessive turbidity (large number of particles) in your water, which may cause the cartridges to plug prematurely.

Water Pressure Gauge.

When the system is not in use, the needle will show the Static, or standing pressure on the filters. When the Crysalli unit is being used or the flush valve opened, the needle will show the Dynamic or flowing outlet pressure through the filters.

When Flush valve is open, and the Needle on the gauge is in the red like this, the filters are plugged and need to be changed.



- CR-24FC System shown: Twin Filters, Parallel Flow, 5 GPM, 30,000 Gallon carbon TOC removal capacity. Used with CR-1, CR-2, CR-UCM1, CR-UCM2 & CR-CPS machines.
- Replacement filters: (2 each) 4FC EV969221
- Systems with a PreFilter, use: (1 each) ECP5-10 255482-43

Flush Valve Hose, typically run to drain, or coiled up loose.

Check that there is a hose connected to it and run to drain or uncoil the hose and hold into a bucket. Open this valve by turning the blue handle left, like this image. As water is flowing out the valve/hose, observe the Gauge, check where the needle is at. 10 PSI or lower indicates the filters are plugged and need to be changed.